



AERA SEEDER

OPERATOR & PARTS MANUAL



TABLE OF CONTENTS



ITEM	PAGE
INTRODUCTION	2
SAFETY	3
CALIBRATION	4
STANDARD ROLLER ASSEMBLY	5
DOUBLE ROLLER ASSEMBLY	6
KNIFING ROLLER ASSEMBLY	7
STORAGE	8
PARTS	9-17
WARRANTY	18-19

CONGRATULATIONS!!

Thank you for choosing the **Reist Area Seeder**. We feel confident that this equipment will meet your expectations in workmanship, reliability and performance.

This manual is to assist you with the safe operation of the Area Seeder.

The Reist Area Seeder

Is a versatile piece of equipment to assist you in various primary and over seeding needs.

MODEL NO. _____ **SERIAL NO.** _____.



CAUTION !

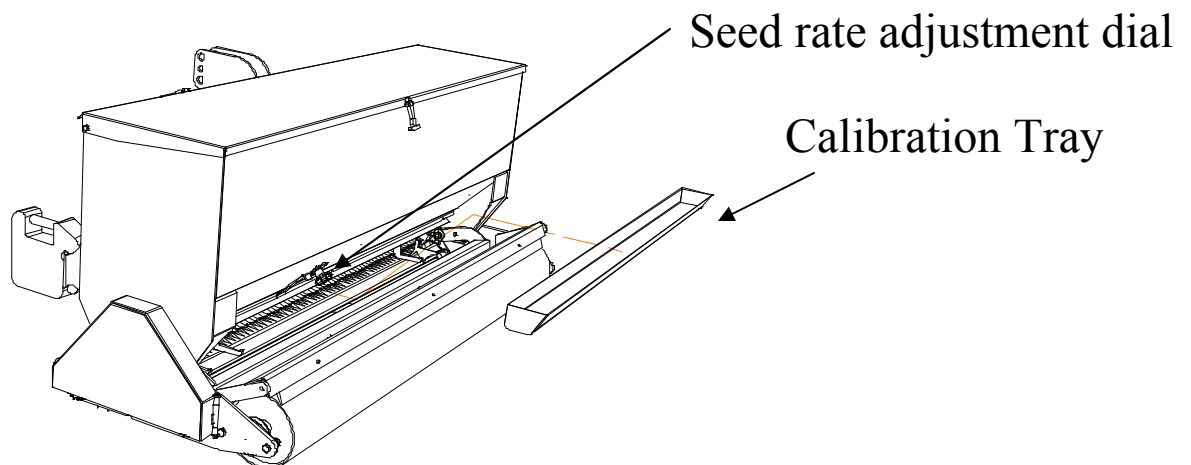
1. For proper safe operation we recommend that the tractor be equipped with an approved Roll-Over Protective Structure and Safety Belt.
2. Do not operate an engine in a confined or non-ventilated area.
3. Do not perform any adjustments or repairs with engine running.
4. Always lower 3 PT hitch to ground before performing adjustments or repairs.
5. Do not operate on excessive incline and always be careful when turning on slopes.
6. Never carry passengers on implement or tractor.
7. Never let a child operate machinery.
8. Hydraulic fluid under pressure can cause serious injury. Do Not use your hands to locate leaks.
9. It is the owner's responsibility to make sure that all operators read this manual before operating the equipment.

Calibrating Seed Flow

To calibrate the seed flow rate, you need a weigh scale and small container.

1. Pour seed into seed box. (Each kind of seed needs to be calibrated separately).
2. Insert calibration tray in bottom of seeder on mounts.
3. Set dial to preferred approximate seed rate .
4. With seed flow open, drive the distance of 100 feet. (drive at the same speed as what you are going to drive when seeding).
5. Weigh seed in the calibration tray and multiply by 2. This equals pounds per thousand feet.

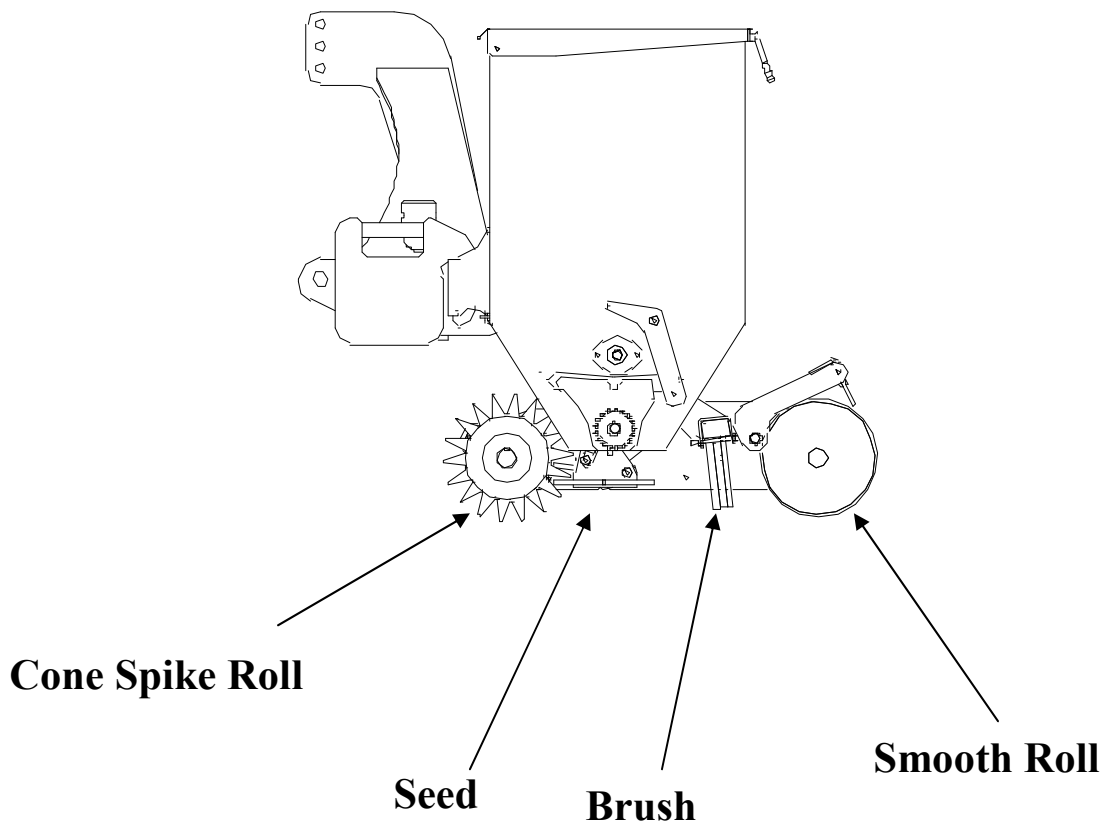
Example: $4\text{lb} \times 2 = 8\text{lb}$ per thousand square ft.



Standard Roller Assembly



Standard

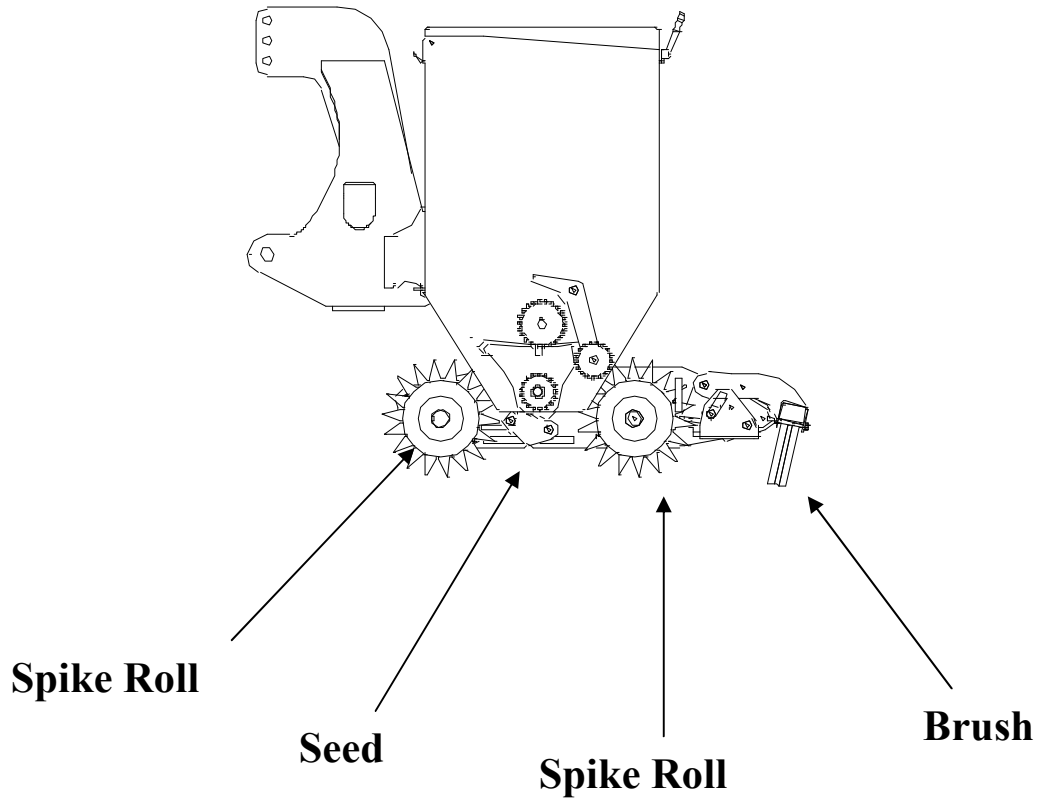


Great for primary and over seeding

For primary seeding, the spike roll breaks up clumps and packs the ground. The seed is then dropped by the seeder and the brush lightly covers the seed. The smooth roll presses the soil to keep the moisture in the ground.

For over seeding the spiked roll pokes small holes into the ground. to moisture, The seed that falls onto the grass is brushed into the holes created by the spike roller. The smooth roll presses down to cover the seed and keep the moisture in.

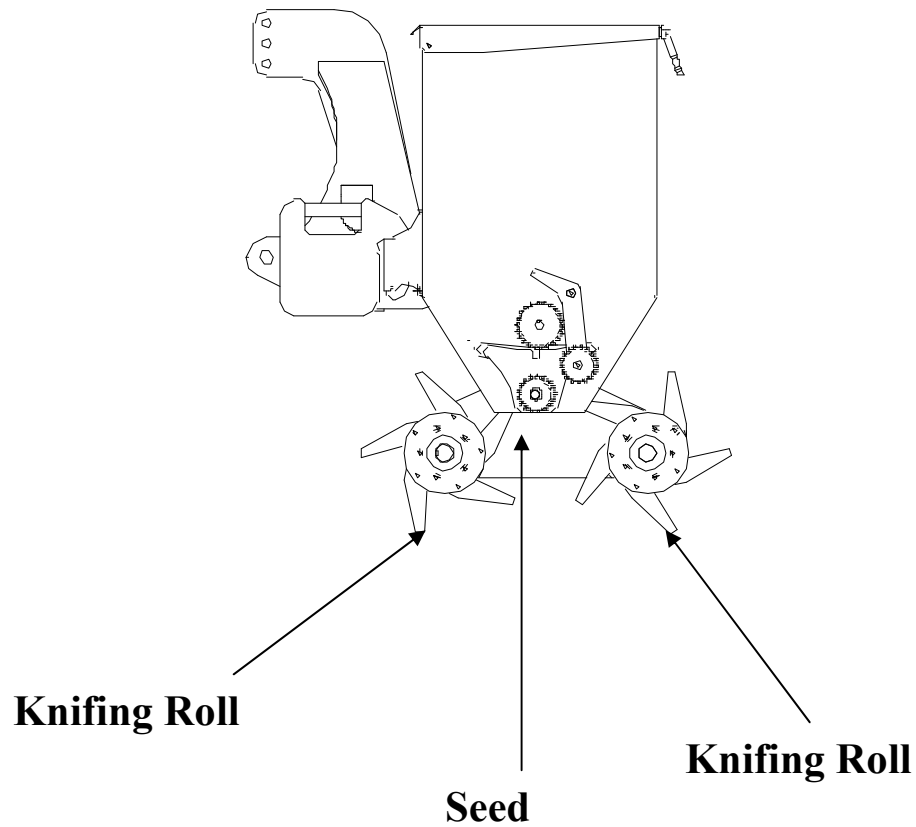
Double Spike Rolls (Optional)



Double the Number of Holes

Over seeding with two spiked rolls has twice the number of holes than the standard roller assembly. Both rolls poke small holes into the ground. Seed that falls onto the grass is brushed into the small holes created by the spike rolls.

Knifing Rolls (Optional)



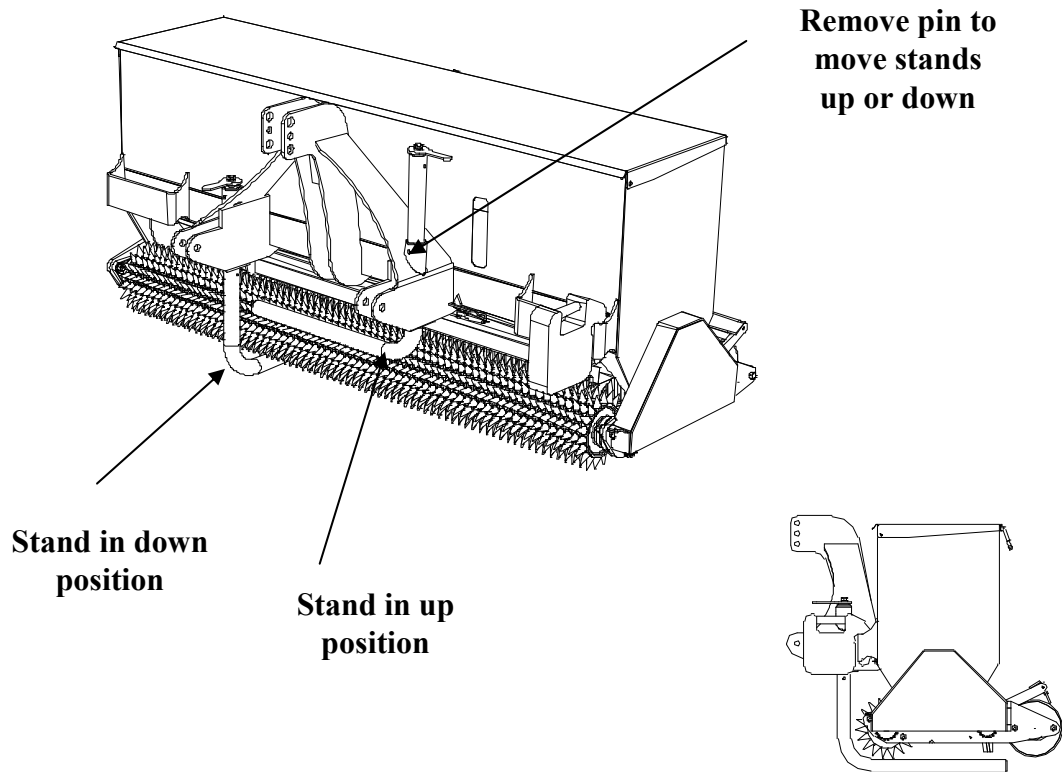
Knifing Rolls

With the Knifing Rolls the knives slice into the ground doing a number of things. It aerates, thatches, loosens and brings up dead grass and other growth between the grass and soil. It slices the roots which causes the grass to grow thicker.

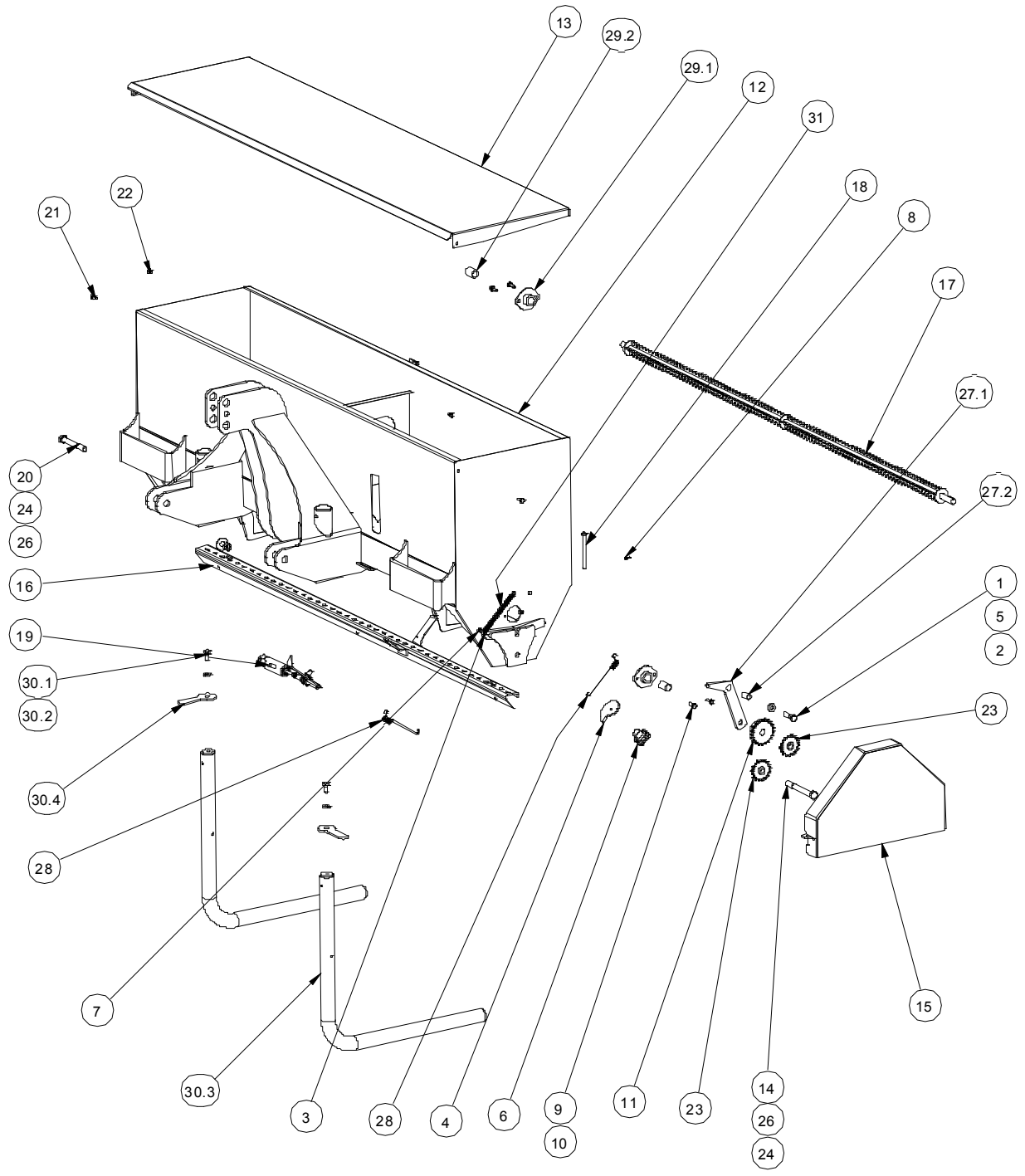
Storage



1. Store in dry ventilated area.
2. Set on stands by lowering stands as pictures below.
3. Store any hydraulic cylinder piston rods in retracted position.
4. Clean before putting into storage.
5. Touch-up paint as needed.
6. Oil seeder chain



PARTS Aera Seeder Frame



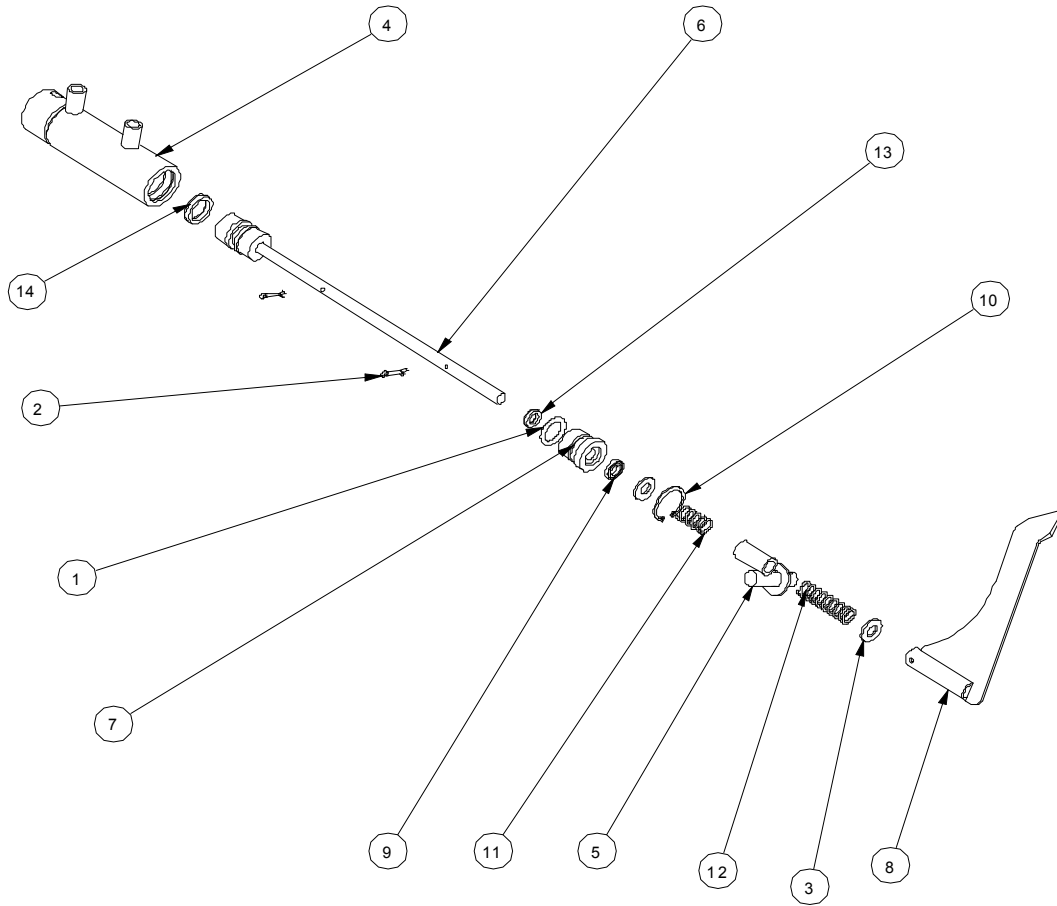
PARTS List



Part numbers with spaces, enter width of Aera Seeder in inches.
 Example: 5027__
 Enter as:502772

Parts List			
ITEM	QTY	PART NUMBER	DESCRIPTION
1	3	12*2	1/2x2 NC Bolt
2	1	12FW	1/2 Flat Washer
3	1	142	1/4x2 NC Bolt
4	1	1026	Seed Rate Dial
5	3	12N	1/2 NC Nut
6	1	134-022	Knob
7	2	14N	1/4 NC Nut
8	1	1812CP	1/8 Cotter Pin
9	4	381	3/8x1 NC Bolt
10	4	38N	3/8 NC Nut
11	1	40B21-3/4	Sprocket
12	1	5002__	Aera Seeder Frame
13	1	5003__	Aera Seeder Lid
14	1	586	5/8x6 NC bolt
15	1	5007	Aera Seeder Shield
16	1	5008__	Slider Assembly
17	1	5009__	Agitater Shaft
18	1	5013	Shield Hinge Pin
19	1	5027	Aera Seeder Cyl Assembly
20	1	585	5/8x5 NC Bolt
21	2	3834	3/8x34 NC Bolt
22	2	38CLN	3/8 NC Lock Nut
23	2	20401708	Idler Sprocket
24	2	58F	5/8 Flat Washer
25	2	58FW	5/8 Flat Washer
26	2	58N	58 NC Nut
27.1	1	5004	Tightener Arm
27.2	1	5005	Tightener Bushing
28	6	H446	Slider Spring
29.1	2	5006	Seeder Brg Bracket
29.2	2	B1216-12	Oilite Bushing
30.1	2	12*1	1/2x1 NC Bolt
30.2	2	12LO	1/2 Lock Washer
30.3	2	5010	Stand
30.4	2	5012	Stand Handle
31	1	TE1588-203-1016	Chain Tensioner
32	1	40RC	Drive Chain (not shown)

PARTS Cylinder

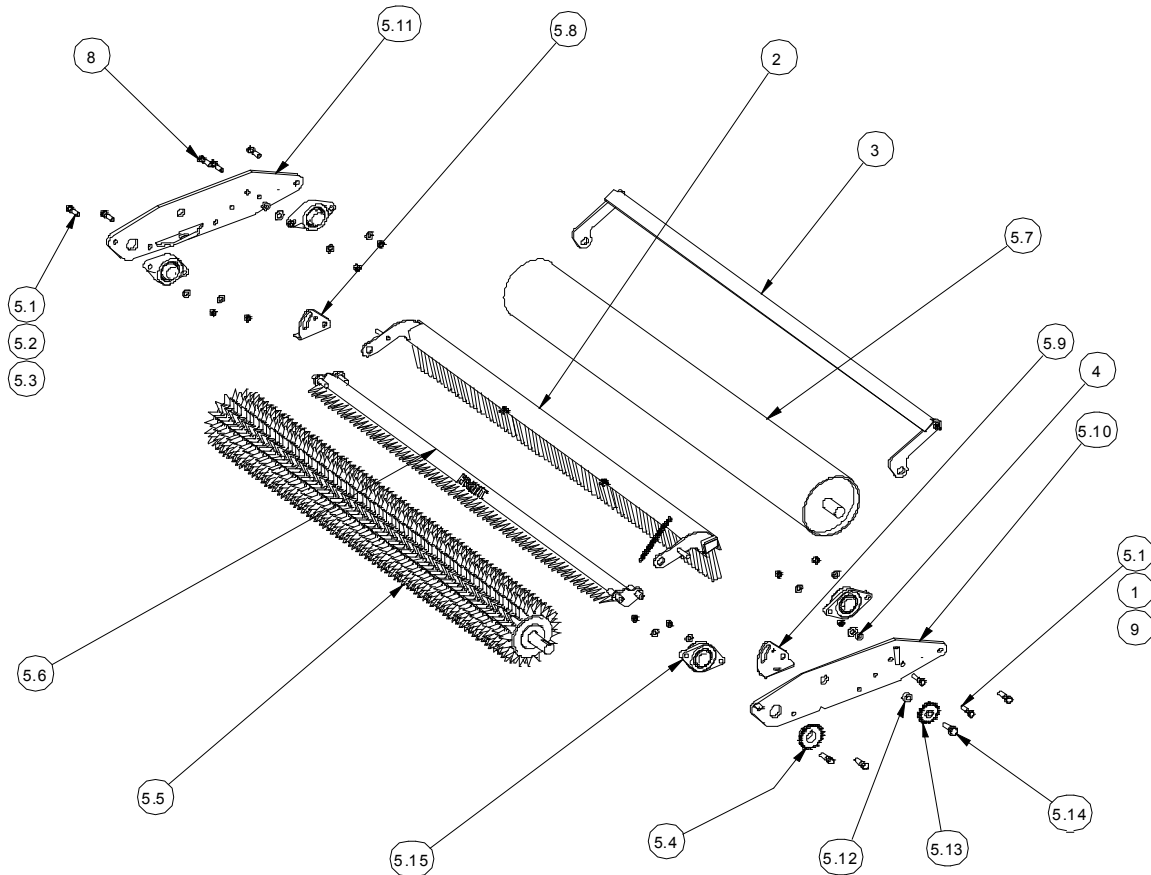


Part numbers with spaces, enter width of Aera Seeder in inches.
 Example: 5027 _
 Enter as:502772

Parts List			
ITEM	QTY	PART NUMBER	DESCRIPTION
1	1	210	ORING
2	2	33234CP	Cotter Pin
3	2	38F	Washer A
4	1	5042	Cylinder Tube
5	1	5043	Cylinder Slider
6	1	5044	Stem & Piston
7	1	5045	Gland
8	1	5046	Open Shut Indicator
9	1	CR3645	Wiper
10	1	N5000-106	Internal Snap Ring
11	1	TC1427-183-0349	Compresion Spring
12	1	TC1524-183-0762	Compresion Spring Lg Cyl
13	1	U12-0.37	Polly Pack
14	1	U12-0.75-18B	Polly Pack

PARTS

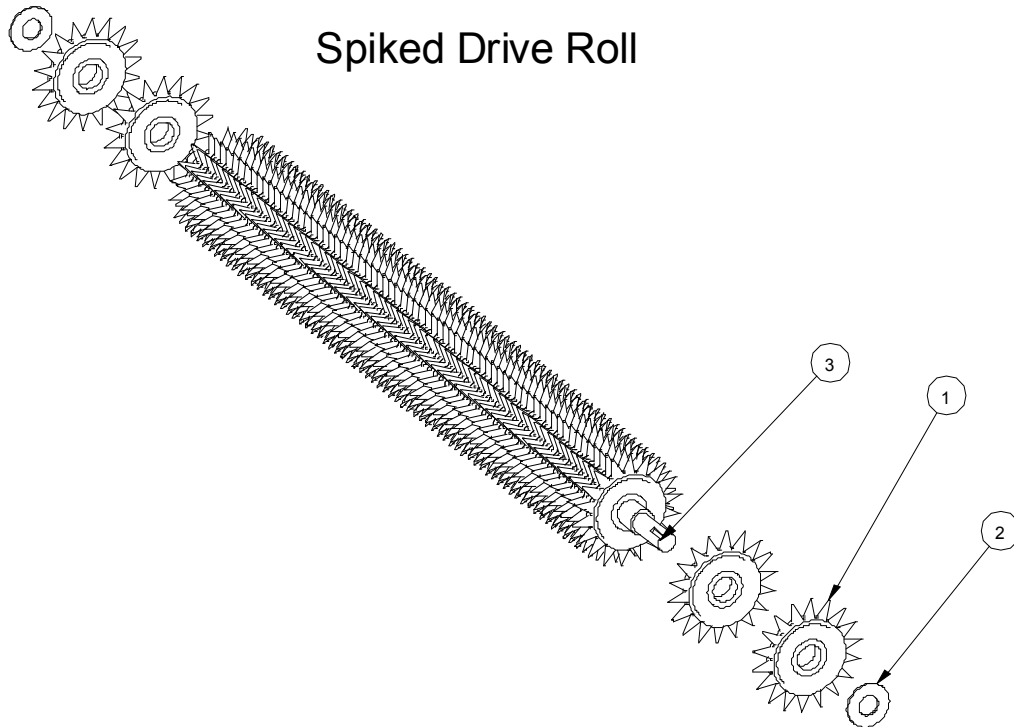
Standard Roll Assembly



Part numbers with spaces, enter width of Aera Seeder in inches.
 Example: 5027_ _
 Enter as:502772

Parts List			
ITEM	QTY	PART NUMBER	DESCRIPTION
1	3	12N	1/2 NC Nut
2	1	5026_ _	Aera Seeder Brush
3	1	5027_ _	Smooth Roll Scraper
4	2	5028	Scraper Bushing
5.1	8	12*2	1/2x2 NC Bolt
5.2	8	12FW	1/2 Flat Washer
5.3	8	12N	1/2 NC Nut
5.4	1	40B21-1-1/2	Drive Sprocket
5.5	1	5014_ _	Spike Drive Roll
5.6	1	5015_ _	Front Peg Scraper
5.7	1	5016_ _	Smooth Roll
5.8	1	5019	Right Peg Scraper Hinge
5.9	1	5020	Peg Scraper Hinge Left
5.10	1	5023	Side Plate Left S
5.11	1	5024	Side Plate Right S
5.12	1	5025	Idler Spacer
5.13	1	20401708	Idler Sprocket
5.14	1	58*2	5/8x2 NC bolt
5.15	4	UCLF208108TC	1-1/2" bearing
38	1	40RC	Drive Chain

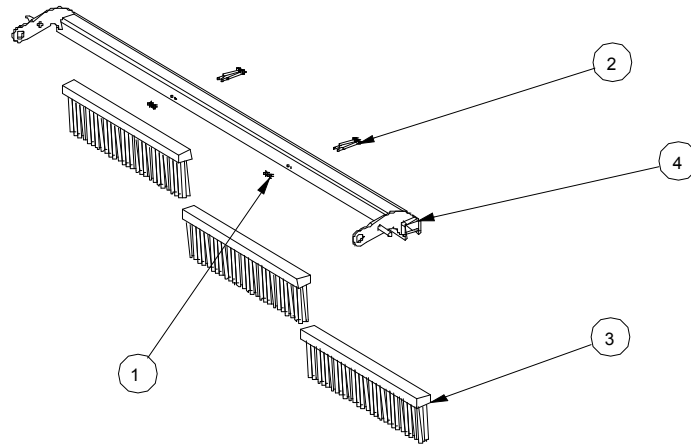
PARTS Spiked Drive Roll



Part numbers with spaces, enter width of Aera Seeder in inches.
 Example: 5027__
 Enter as:502772

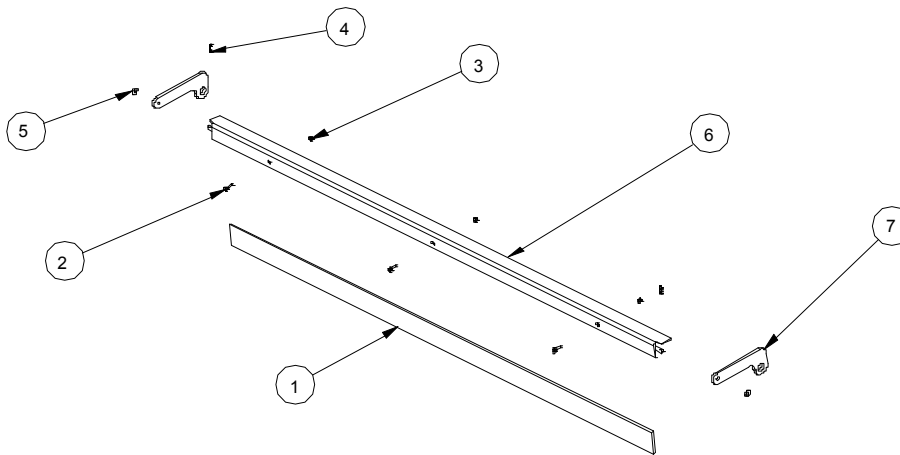
Parts List			
ITEM	QTY	PART NUMBER	DESCRIPTION
1	72	5001	Aera Seeder Spike
2	2	112F	1- 1/2 Flat Washer
3	1	5031__	Spike Roller Drive Shaft

PARTS Broom & Scraper



Part numbers with spaces, enter width of Aera Seeder in inches.
 Example: 5027__
 Enter as:502772

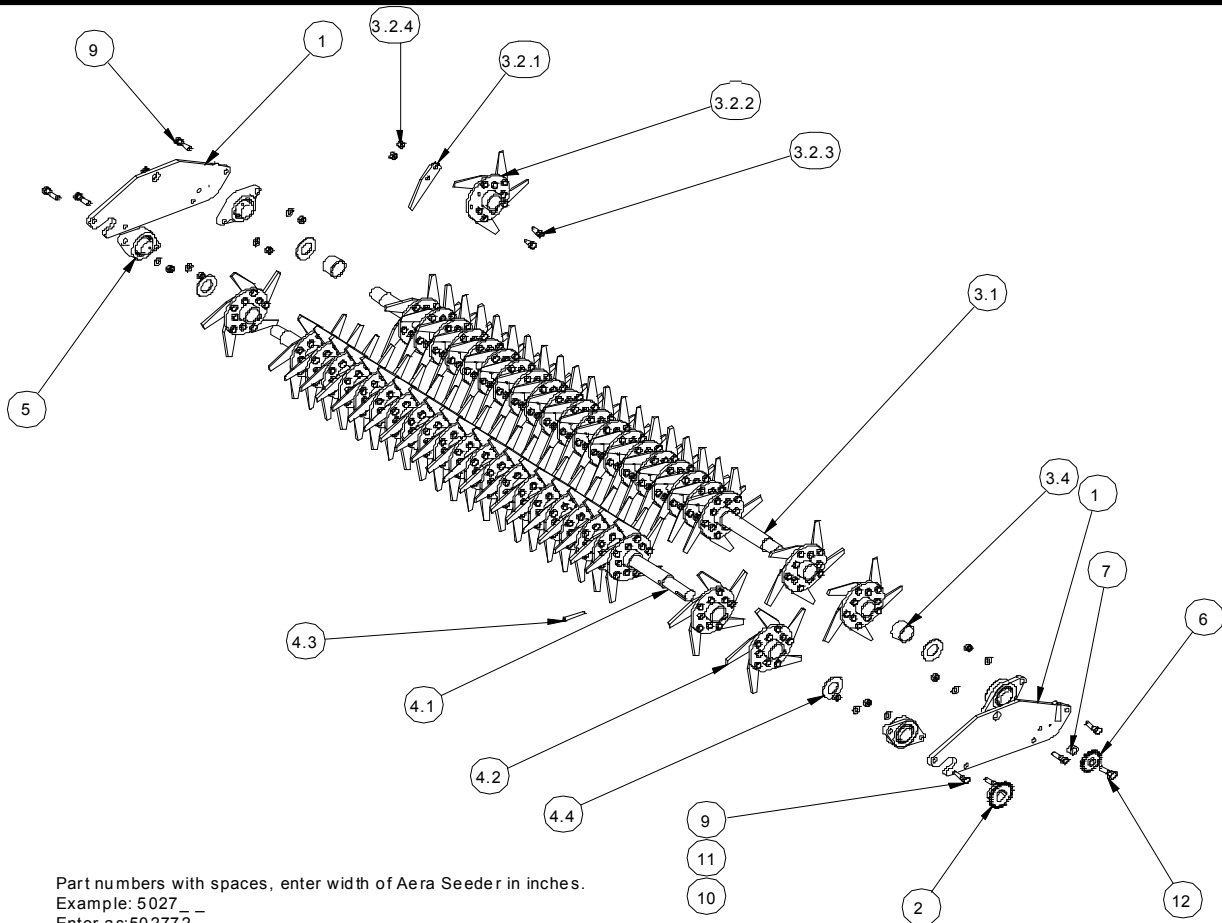
Parts List			
ITEM	QTY	PART NUMBER	DESCRIPTION
1	4	1/4 NC Nut	Hex Nut
2	4	14*3	1/4x3 bolt
3	3	2010	Main Frame Brush
4	1	5039__	Aera Seeder Broom Mount



Part numbers with spaces, enter width of Aera Seeder in inches.
 Example: 5027__
 Enter as:502772

Parts List			
ITEM	QTY	PART NUMBER	DESCRIPTION
1	1	1/4x3x__ UHMW	UHMW Scraper
2	3	14*1	1/4x1 NC Nut
3	3	14CLN	1/4 Lock Nut
4	2	1834CP	Cotter Pin
5	2	38F	3/8 Flat Washer
6	1	5040__	Smooth Roll Scraper Angle
7	2	5041	Scraper Bracket

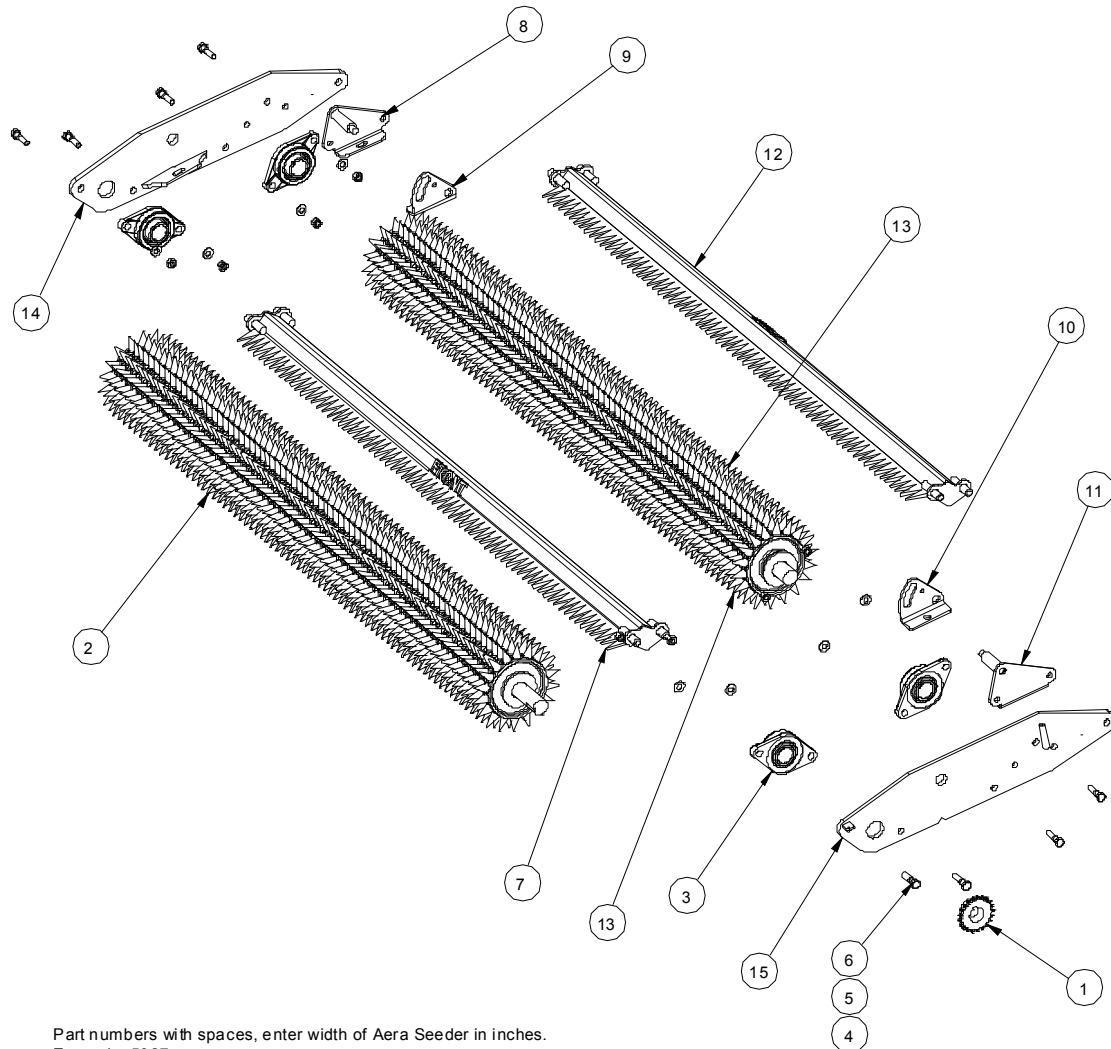
PARTS Knifing Assembly



Part numbers with spaces, enter width of Aera Seeder in inches.
 Example: 5027 _ _
 Enter as: 502772

Parts List			
ITEM	QTY	PART NUMBER	DESCRIPTION
9	8	12*2	1/2x2 NC Bolt
11	8	12FW	1/2 Flat Washer
10	8	12N	1/2 NC Nut
2	1	40B21- 1-1/2	Drive Sprocket
6	1	4W20401708	Idler Sprocket
7	1	5025	Idler Spacer
1	2	5032	Knifing Side Plate
12	1	58*2	5/8x2 NC bolt
4.4	2	112F	1-1/2 Flat Washer
4.3	1	383RP	3/8x3 Roll Pin
4.2	47	5034	Slitter Assembly
4.1	1	5038_ _	Slitter Drive shaft
3.3	2	112F	1-1/2 Flat Washer
3.1	1	5033_ _	Slitter Idler Shaft
3.2.4	230	12N	1/2 NC Nut
3.2.1	115	5035	Slitter Knife
3.2.2	23	5036	Slitter Knife Mount
3.2.3	230	12114	1/2x1-1/4 NC Bolt
3.4	2	5037	Spacer Pipe
5	4	UCLF208108TC	1-1/2" bearing

PARTS Double Spike Roll



Part numbers with spaces, enter width of Aera Seeder in inches.
 Example: 5027__
 Enter as:502772

Parts List			
ITEM	QTY	PART NUMBER	DESCRIPTION
6	8	12*2	1/2x2 NC Bolt
5	8	12FW	1/2 Flat Washer
4	8	12N	1/2 NC Nut
1	1	40B21-1-1/2	Drive Sprocket
2	1	5014__	Spike Drive Roll
7	1	5015__	Front Peg Scraper
8	1	5017	Rear Broom Bracket Right
11	1	5018	Rear Broom Bracket Left
9	1	5019	Right Peg Scraper Hinge
10	1	5020	Peg Scraper Hinge Left
12	1	5021__	Peg Scraper Rear
13	1	5022__	Spiked Idler Roll
15	1	5023	Side Plate Left S
14	1	5024	Side Plate Right S
3	4	UCLF208 108 TC	1-1/2" bearing

WARRANTY



All new Reist machinery is warranted to be free from defects in material or workmanship, which may cause failure under normal usage and service when used for the purpose, intended, for a period of 12 months.

This warranty applies only to a new Reist product, there being no warranty of any nature in respect to new products that have been modified or altered, repaired, neglected, or used in any way, which, in the opinion of Reist adversely affects its performance.

In the event of failure of a part or parts, and upon inspection, Reist is satisfied that failure is due to defective material or workmanship within 12 calendar months, from the date of delivery to an end user, such defective part or parts will be repaired or replaced by Reist at his business location. It is the responsibility of the buyer, at his expense, to transport the machine or equipment to the manufacturer service shop or, to an authorized service depot or, alternatively, to reimburse Reist for any travel or transportation expense involved in fulfilling this warranty.

When requested by Reist, part or parts shall be returned for inspection, transportation prepaid, to a place designated by Reist.

Continued on next page....

WARRANTY



IN NO EVENT SHALL THE BUYER BE ENTITLED TO RECOVER FOR INCIDENTAL OR CONSEQUENTIAL DAMAGES, INCLUDING, BUT NOT LIMITED TO, LOSS OF PRODUCT, INCONVENIENCE, RENTAL OR REPLACEMENT EQUIPMENT, LOSS OF PROFIT, OR OTHER COMMERCIAL LOSS.

This warranty becomes void and null if the equipment is modified, breaks down as the result of an accident, is not operated according to manufacturers recommendations, damaged by negligence or if maintenance has not been carried out as specified.

THIS WARRANTY IS NOT TRANSFERABLE.

**Reist Industries (Elmira) Ont.
100 Union St., Elmira
Ontario, Canada, N3B 2Z2
www.reistindustries.com**